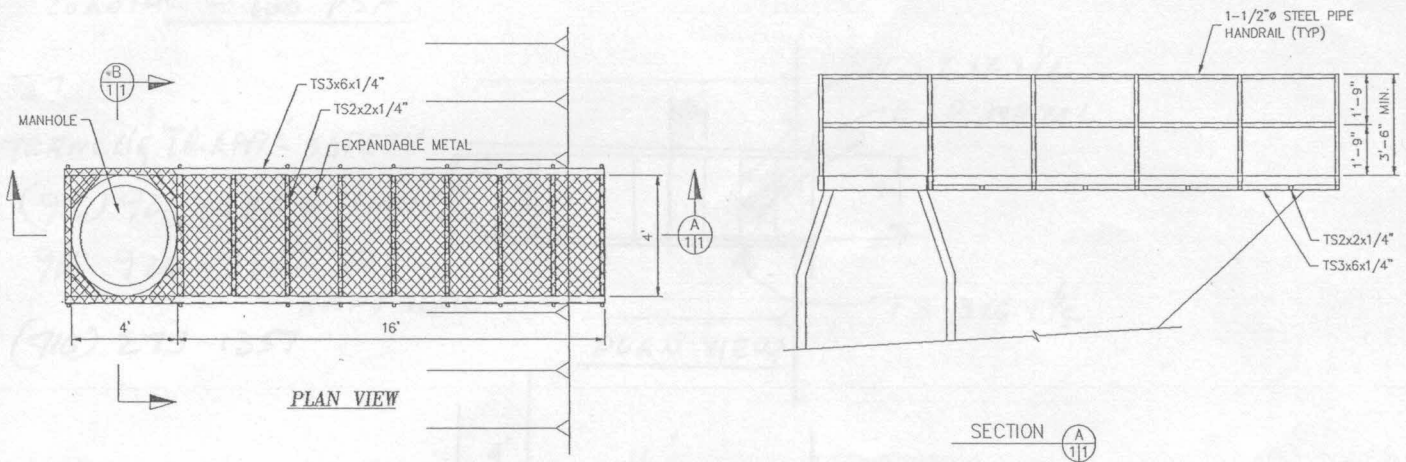


# MANUFACTURERS TABULATED DATA SHEET MANHOLE WORK ACCESS BRIDGE

<b>Allowable Loading</b>	<b>100 PSF</b>	<b>Maximum</b>	<b>5000 LBS</b>
<b>Bridge Weight</b>	<b>1500 LBS</b>		



**Notes:**

- 1) Bridge access end shall be set on flat stable ground. Workers are allowed on the bridge only after it has been properly set from the bank to the manhole.
- 2) This Tabulated Data applies only to the structural capacity of the access bridge. Workers shall be aware of and adhere to all OSHA requirements regarding access, egress and all related requirements for working inside confined space and manholes.
- 3) Workers shall utilize properly sized slings and equipment for moving and setting this bridge.
- 4) Workers shall not be under or in the swing range of the bridge as it is being transported and set.
- 5) Repairs and modifications shall be approved by manufacturer or RCE.

# TTS

**TRENCH & TRAFFIC SAFETY SUPPLY INC**  
 2175 Acoma street  
 Sacramento, Ca. 95815  
 (916) 920-3304 Phone  
 (916) 920-3305 Fax  
[www.flagger.info](http://www.flagger.info)



## ACCESS BRIDGE

**J.M. TURNER ENGINEERING, INC.**  
**CONSULTING ENGINEERS**  
 1335 N. DUTTON AVE., SANTA ROSA, CA. 95401  
 (707) 528-4503 FAX (707) 528-4505

DATE	REVISED	JOB
10/6/2005	12/8/2005	9121-1